



Welcome to Year

Year 2 Teacher

Mrs Matthews

Year 2 Teaching Assistant

Mrs Magness

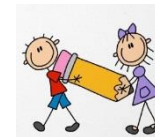
Our Curriculum

Following the National Curriculum, the school is able to provide a wide range of activities but places the greatest emphasis on making sure that all children are at a good level of literacy and numeracy by the time they leave our school at age 11. We value these basic skills because they form the building blocks of future learning. As mentioned previously, the curriculum is planned in a very integrated and applied way, where many subjects are practically linked in a topic based approach. ICT is seen as an essential part of all subjects.



Within school, from Year 1 to Year 6, we use a mathematics development programme (Assertive Mentoring) which bases itself on pre and post testing procedures. Children are tested on their Year Group's expectations and then areas of work are then planned from the results. In addition, within each area of maths being taught, smaller pre and post assessment tasks are completed by the children so that progress can clearly be monitored on a shorter term basis.

For more information on Mathematics please follow the link below:



English



Writing

Writing, and the progression of writing, is hugely important. We use a programme called Active English, which focusses on grammar and punctuation, and the development of it, from Year R to Year 6. It is taught in an intensive and fun way, relating particular grammar elements to picture clues and actions. This grammar and punctuation is then applied in the children's writing.

Spelling and Reading

The basis of all our reading and spelling teaching is phonics. These are taught from Year R using a mixture of Ruth Miskin and Letters and Sounds. In Key Stage 2 the Ruth Miskin Get Spelling programme is used alongside the teaching of the National Curriculum spelling requirements. Within reading - comprehension of the text being read becomes an increasingly important part as the children move up the school.

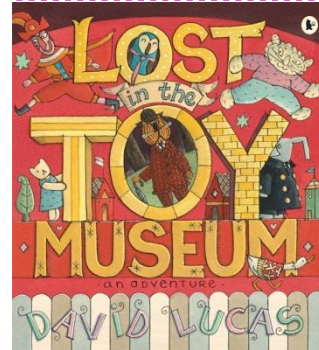
For more information on phonics and reading please follow the link below:

Year 2 - Topics to look forward to

Our Topics

Autumn Term 1

'Through the Keyhole' ;with a focus on the Toy Shop.



In science we learn about a range of different materials and their properties. We look at ways to sort them and learn about their uses in everyday life. We link this to the materials that toys were made from in the past and how they are made today. In our history we look at the way toys have changed over the years and order toys from the past to today chronologically to develop our historical vocabulary. In art we focus on the key skills of shading and drawing where we draw a range of different toys and develop our close observations skills. We also design and make shadow puppets thinking about the materials that we choose before evaluating our finished puppet. Our PSHE themes are 'New Beginnings' and 'Say No To Bullying'. In RE we learn about the celebrations of Christian and Jewish communities. Our computing looks at the use of computers to use Publisher and Word for creating and editing documents where we learn to import pictures into our work.

We also visit Peterborough Museum for our trip and have a close hands on look at toys from the past in different workshops.

Autumn Term 2

'Fact or Fiction' ; Looking at The Great Fire of London.



In science we continue to learn about materials and their uses and select suitable materials for our DT task when we design and make a Tudor House. Our History is based upon the events of The Great Fire of London where the children learn about what it was like to be living in London in 1666. We learn about key historical figures such as Samuel Pepys and how his diaries give information about life at that time. In PSHE theme of Say No to Bullying continues and we also look at the 'Getting on and Falling Out' theme. We continue with our RE theme from autumn term 1 looking at celebrations and conclude this with a whole key stage production. We continue to use Publisher and Word for creating and editing documents and we use selected websites to research events and lifestyles from the past. We learn that not all websites have accurate information.

Spring Term 1&2

Wheels Wings and Other Things.



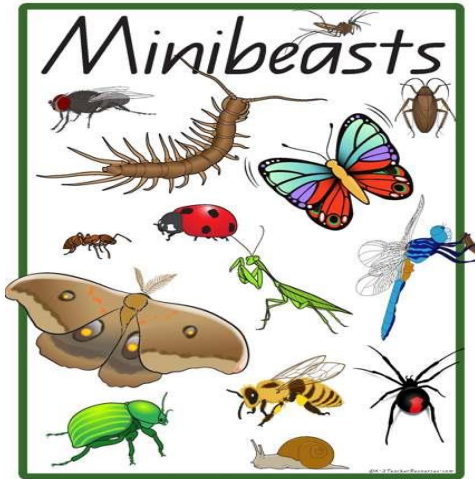
Our science looks at the topic of Animals including humans so we focus on how humans stay healthy; learning about a balanced diet and the importance and effects of exercise. In Geography we compare York to Deeping St James and look at routes and journeys in preparation for a trip to York Railway Museum. We even travel by train ready for our art and history work. In art we make 3D wheels and in History we look at famous railway journeys and trains from the past.

Our PSHE theme is 'Going For Goals' and in RE we learn about Holy Books from the Jewish and Christian faiths.

During the second half of the term our science topic of Animals including Humans continues. We look at food chains and lifecycles. In Geography we learn about the countries within the United Kingdom and the continents and countries around the world. Our PSHE theme is 'Good To Be Me' and in RE we continue to learn about Holy Books.

Summer Term 1

'Our World'



In science we look at habitats and a range of different nocturnal animals as part of the topic 'All Living Things and Their Habitats'. We learn about ways to collect and organise data and visit the school environmental area to learn about micro habitats. We also begin to classify different animals. In Geography we learn about the Equator and the North and South poles. We also look at how a compass shows the correct direction. We then design and make a portable compass that includes levers and sliders. Our RE looks at Jewish communities. In PSHE we cover the theme 'Relationships'.

Summer Term 2

Air Land and Sea



The science work focusses on plants and we learn about growth and the needs of plants. We also continue to learn about the school environment area and study a range of mini beasts. We learn how to sort and organise our findings and make close observations of a range of mini beasts. We plan and carry out investigations to answer different questions about plants and mini beasts. In art we look at creating pictures of different plants and flowers. We study and compare the art work of Gustav Klimt and Vincent Van Gogh and then create our own sunflower pictures in a similar style to our preferred artist. Our RE continues to look at Jewish communities. In PSHE the theme is 'Changes.' In our computing we use interactive websites to learn about different animals. We also create and edit documents and pictures.

Surviving in Year 2!!!

Homework

We believe that children greatly increase their potential if they reinforce what they learn in school in their home environment.

"Learning Logs": Please see the attached homework information sheet that explains the importance of learning key vocabulary for spelling and the multiplication tables relevant for class two.



Other Essentials



School Uniform

Our school uniform is smart and attractive and very popular with both children and parents. We have a policy in school not to allow jewellery. No necklaces, rings or earrings to be worn, apart from studs. This is largely a health and safety issue. If your child is to have their ears pierced, please can parents ensure that it is done in a longer school holiday as the children will have to be able to take them out themselves for PE and swimming. Staff are not allowed to do this for them. It is also against school policy for children to have dyed hair or hair styles that are out of the ordinary.

- Grey trousers (girls and boys)
- Grey skirt or pinafore
- Polo shirt (jade green) with logo
- Sweatshirt (navy) with logo
 - Cardigan for girls (navy)
 - Grey socks/tights (white in summer)
 - Summer blue checked dress
- Smart black shoes - no trainers or boots



PE Kit - The school PE kit is navy shorts, white t-shirt with logo and trainers. Children can wear navy jogging bottoms and jumper in colder weather.

Children are encouraged to bring water bottles into school so they can keep hydrated throughout the school day. Please ensure that your child's bottle is clearly named and only contains water.

Contact details

Headteacher: Mr Ian Wilkinson Chair of Governors: Mr D. Ludford

Address: Deeping St. James Community Primary School, Hereward
Way Deeping St James Nr Peterborough PE6 8PZ

Telephone: 01778 342314 **Fax:** 01778 348277